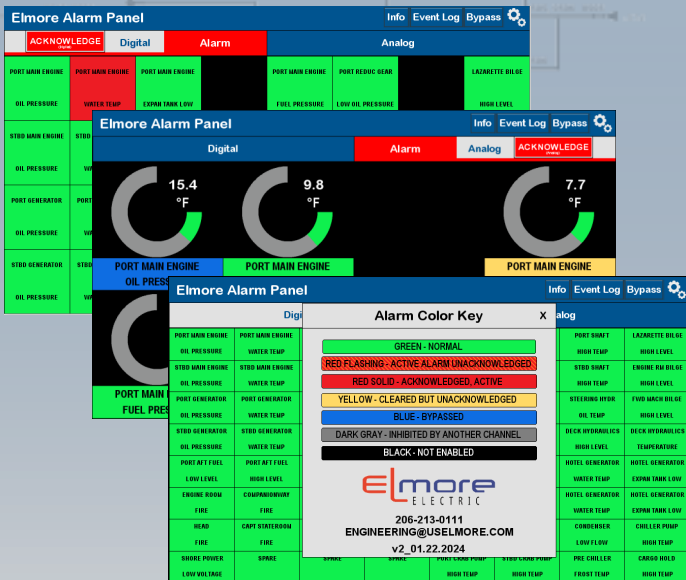


HIGHLINER

SHIPBOARD ALARM PANEL

Alarm & Alert System

BUILT AROUND A SIMPLE IDEA:
IT'S YOUR BOAT, YOU SHOULD BE ABLE TO RUN IT YOUR WAY!



- **NO SERVICE CALL NEED TO CUSTOMIZE YOUR ALARM PANEL - FINALLY!**
- **MODERN ARCHITECTURE DESIGNED FOR EXPANSION & FUTURE UPGRADES**
- **BASE SYSTEMS START WITH 32, 64, 96 OR 128 DIGITAL INPUTS; ADD 8, 16, 24, 40, OR 48 ANALOG INPUTS**
- **120VAC + 24VDC POWER INPUT FOR REDUNDANT POWER SUPPLY (12VDC Avail)**
- **24/7 MONITORING, INTERMITTENT ALARM DETECTION, EVENT LOG REPORTING**
- **POWERS UP TO 4 INDIVIDUAL 10" IP65 TOUCH PANELS FOR REMOTE MONITORING**
- **ALARM BYPASS (TIMER CONTROLLED) FOR ROUTINE MAINTENANCE**
- **20" x 24" x 8" ENCLOSURE (32 DIGITAL OR 32 DIGITAL + 8 ANALOG)**
- **30" x 24" x 8" ENCLOSURE (ALL OTHERS)**



OPTIONS & PRICING

32 DIGITAL ALARM POINT SYSTEM	\$ 8,975
64 DIGITAL ALARM POINT SYSTEM	\$ 11,450
96 DIGITAL ALARM POINT SYSTEM	\$ 14,100
ADD 8 ANALOG ALARM POINTS	\$ 735
ADD 16 ANALOG ALARM POINTS	\$ 1,510
ADD 24 ANALOG ALARM POINTS	\$ 2,265
ADDITIONAL 10" TOUCH PANEL	\$ 965 each

EASILY CUSTOMIZED—BY YOU!

PW PROTECTED ACCESS— YOU CONTROL WHO IS ABLE TO MODIFY SETTINGS AND DISPLAYS

4-20mA ANALOG INPUTS to monitor psi, kPa, Bar, %, RPM, Ft/sec, Ft/min, m/Sec, ltr/min, Gal/min, Knots, MPH, km/h, °F, °C

SUPPORT FOR TWO INDEPENDENT OUTPUTS (i.e. HORN & STROBE) WITH CONSTANT OR PULSE SIGNALS

ALARM INHIBITS FOR CREATING ALARM DEPENDENCIES (I.E. USE AN ENGINE RUN SIGNAL TO ENABLE/DISABLE LOW OIL PRESSURE ALARMS)